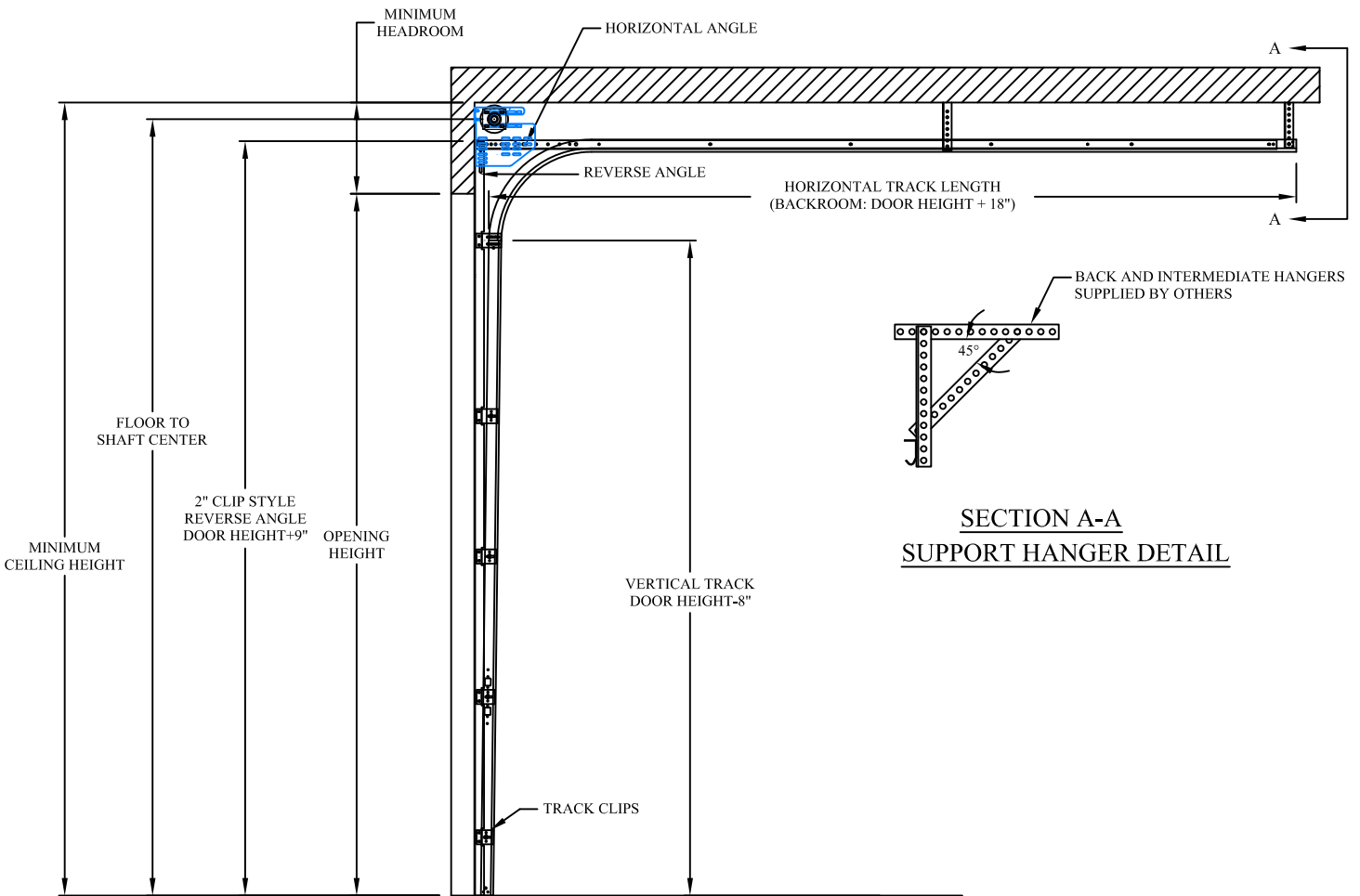


COMMERCIAL REVERSE ANGLE MOUNT STANDARD LIFT



STANDARD LIFT ANGLE MOUNT TRACK SET DETAIL

TORSION SPRING HEAD ROOM REQUIREMENTS FOR STANDARD LIFT DOORS								
TRACK RADIUS	DOOR HEIGHT	DRUM	2", 2-5/8", 3-3/4" SPRINGS		6" & DUPLEX SPRINGS		TRIPLEX SPRINGS	
			HEADROOM	FLOOR TO SHAFT CENTER	HEADROOM	FLOOR TO SHAFT CENTER	HEADROOM	FLOOR TO SHAFT CENTER
15"	UP TO 8' TALL	D400-96	15"	DH + 12"	N/A	N/A	N/A	N/A
	8'-3" - 12' TALL	D400-144	15"	DH + 12"	16-3/4"	DH + 13-11/16"	21-3/16"	DH + 15-1/16"
	12'3" - 16' TALL	D525-216	15-1/2"	DH + 12"	17-1/4"	DH + 13-11/16"	21-3/16"	DH + 15-1/16"
	16'3" - 18' TALL	D525-216	15-1/2"	DH + 12"	17-1/4"	DH + 13-11/16"	21-3/16"	DH + 15-1/16"
	18'3" - 20' TALL	D800-384	18-3/4"	DH + 13-11/16"	18-3/4"	DH + 13-11/16"	21-3/16"	DH + 15-1/16"
12"	UP TO 8' TALL	D400-96	12"	DH + 9-7/8"	N/A	N/A	N/A	N/A
	8'-3" - 12' TALL	D400-144	12-3/4"	DH + 9-7/8"	13-1/4"	DH + 10-13/16"	18-1/8"	DH + 12-3/16"
	12'3" - 14' TALL	D525-216	13-1/4"	DH + 9-7/8"	14-1/4"	DH + 10-13/16"	18-1/8"	DH + 12-3/16"

NOTES:

AN ADDITIONAL 4" OF HEADROOM IS REQUIRED FOR A SINGLE TROLLEY OPERATOR IF INSTALLED.

DH = DOOR HEIGHT

AN ADDITIONAL 6" OF HEADROOM IS REQUIRED FOR A DUAL TROLLEY OPERATOR IF INSTALLED.