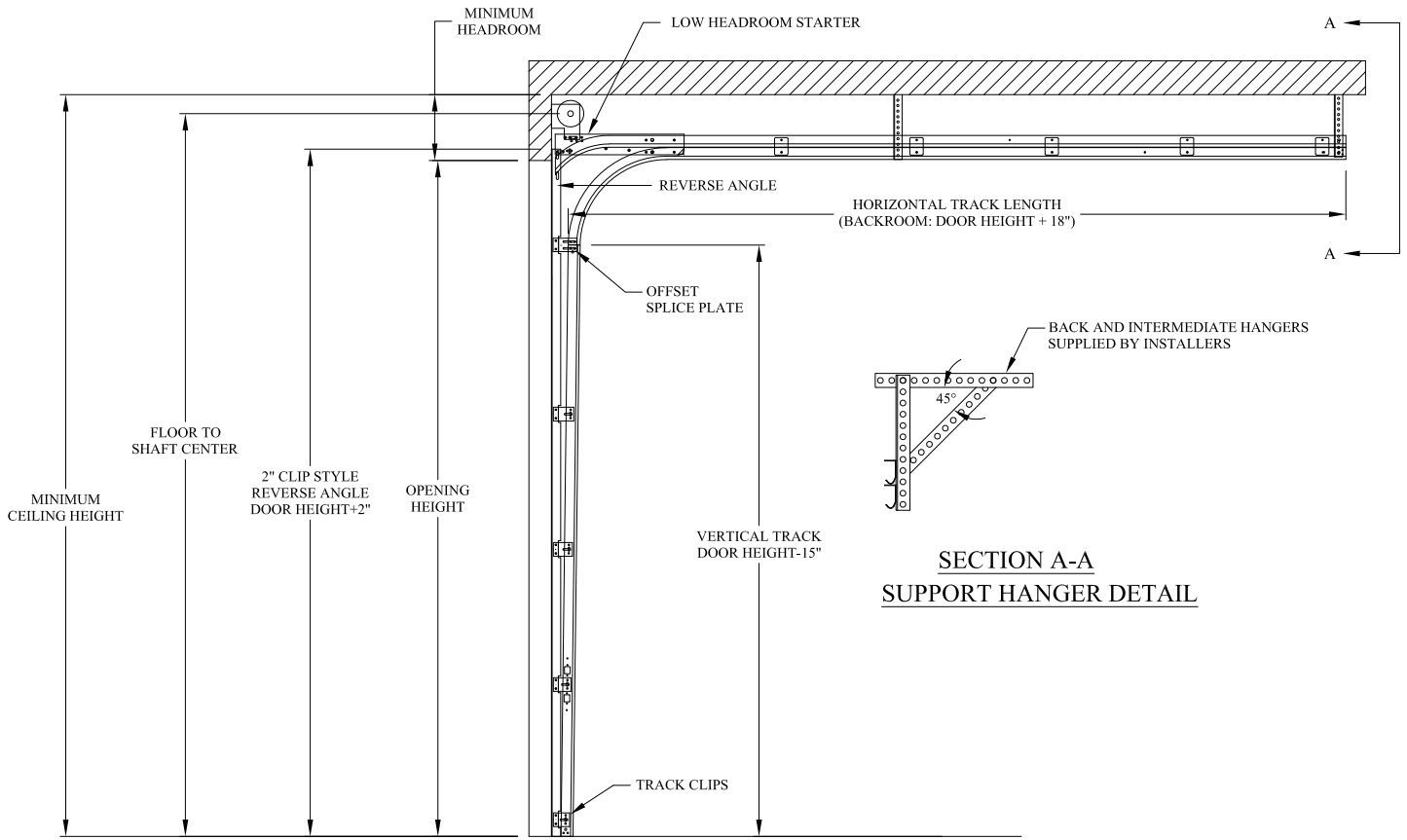


**COMMERCIAL ANGLE MOUNT LOW HEADROOM
TO THE FRONT TRACK DETAIL**



LOW HEADROOM TO THE FRONT ANGLE MOUNT TRACK SET DETAIL

TORSION SPRING HEAD ROOM REQUIREMENTS FOR LOW HEADROOM TORION TO THE FRONT DOORS				
DOOR HEIGHT	END BEARING PLATE	DRUM	HEADROOM	FLOOR TO SHAFT CENTER
UP TO 8' TALL	3-3/8"	D400-96	11-3/16"	DH + 8-5/16"
8'-3" - 12' TALL	3-3/8"	D400-144	11-3/16"	DH + 8-5/16"
12'3" - 16' TALL	4-3/8"	D525-216	12-3/16"	DH + 8-5/16"
16'3" - 18' TALL	4-3/8"	D525-216	12-3/16"	DH + 8-5/16"
	5" OR 6"	D800-384	15-1/16"	DH + 10-1/16"

NOTES:
AN ADDITIONAL 4" OF HEADROOM IS REQUIRED FOR A SINGLE TROLLEY OPERATOR IF INSTALLED.

DH = DOOR HEIGHT