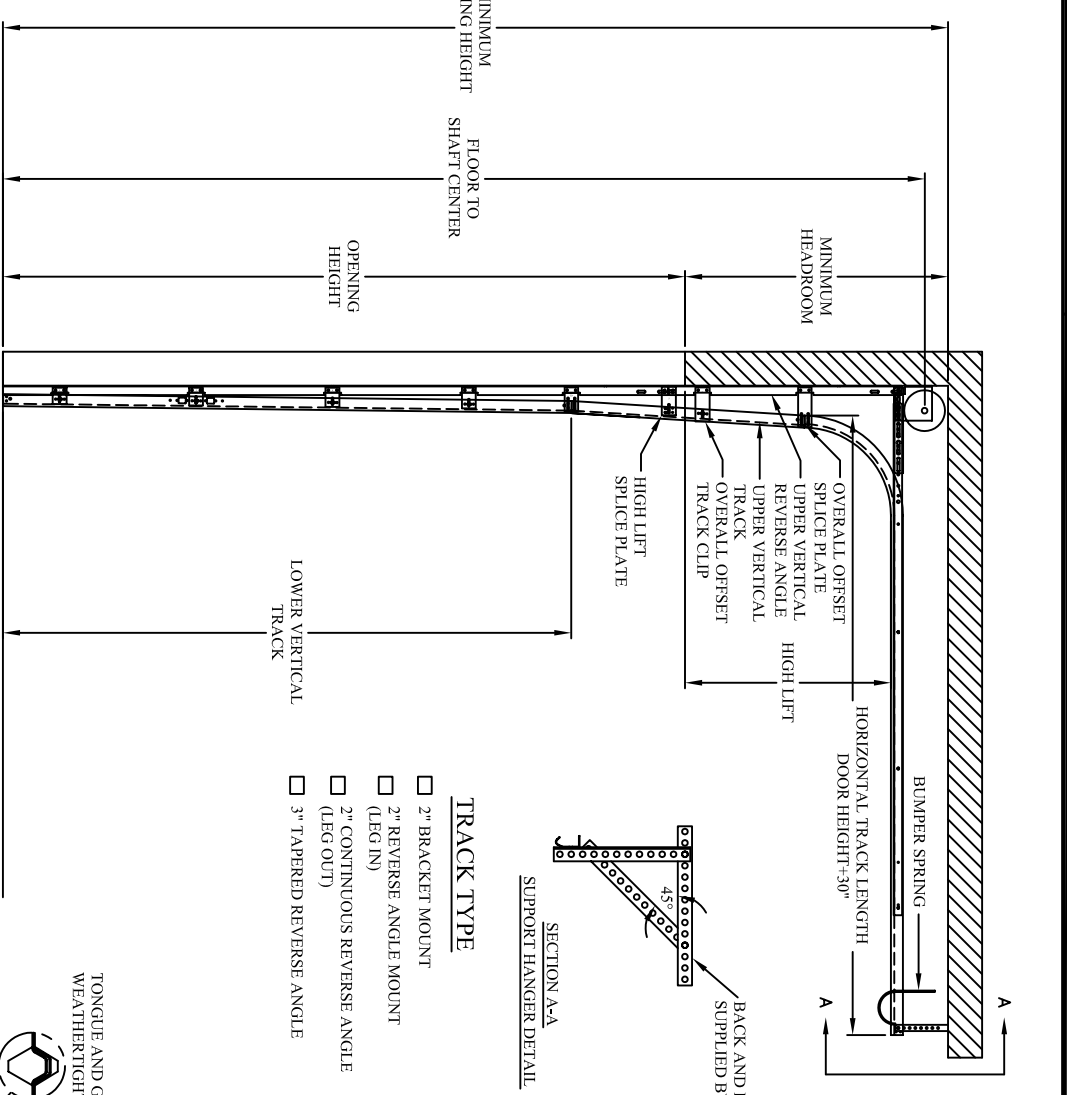
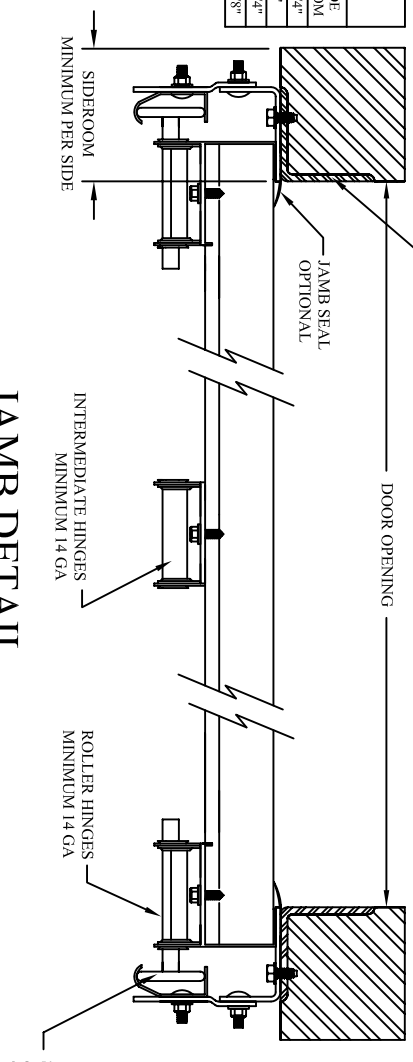


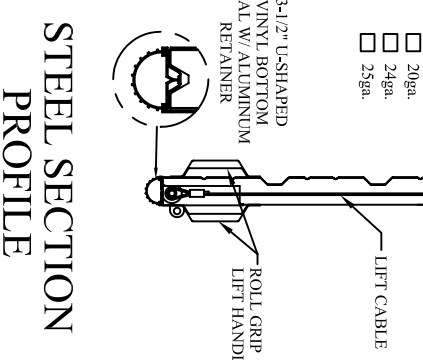
DOOR INTERIOR ELEVATION



HIGH LIFT TRACK SET DETAIL



JAMB DETAIL



SIDE ROOM REQUIREMENTS

MOUNT TYPE	SIDE ROOM
BRACKET	4-3/4"
REVERSE ANGLE	3"
CONTINUOUS ANGLE	5-1/4"
TAPERED REVERSE ANGLE (3")	5-3/8"

HEADROOM REQUIREMENTS

DRUM	HIGH LIFT	MINIMUM HEADROOM
D400-54	9" - 54"	HIGH LIFT + 9"
D525-54	9" - 54"	HIGH LIFT + 10"
D575-120	55" - 120"	HIGH LIFT + 12-3/8"
D6375-164	120" - 164"	HIGH LIFT + 13-3/8"

* ADD 4" FOR OPERATOR.
 ** ADD 1" FOR 3" TRACK.

FLOOR TO SHAFT CENTER REQUIREMENTS

DRUM	HIGH LIFT	FLOOR TO SHAFT CENTER
D400-54	9" - 54"	DH + HL + 5-5/8"
D525-54	9" - 54"	DH + HL + 6-1/8"
D575-120	55" - 120"	DH + HL + 7-7/16"
D6375-164	120" - 164"	DH + HL + 7-7/16"

* ADD 1" FOR 3" TRACK.



CUSTOMER:

CONTACT:
 PHONE:
 SUPPLYING DOOR CENTER:
 DRAWN BY:

JOB NAME:
 FAX:

SPRING ASSEMBLY:

CYCLE LIFE:
 OPERATOR:

PROPRIETARY RIGHTS of AMARR GARAGE DOORS, INC. are involved in the subject matter of this material and all manufacturing, reproduction, use, and sales rights pertaining to such subject matter are expressly reserved. It is submitted in full confidence for a specified purpose, and the recipient, by accepting this material, agrees that this material will not be used, copied, or reproduced in whole or in part, nor its contents revealed in any matter to any person except to meet the purpose for which it was delivered.

165 CARRIAGE COURT WINSTON-SALEM, N.C. 27105
 TITLE: MODEL 2000/2400/2500
 PART NUMBER: HIGH LIFT
 SCALE: SHEET: 1 OF 1

DATE:
 CHECKED:
 APPROVED:

DATE:
 DATE:
 DATE:

MATERIALS:
 FILE PATH:

QTY.	WIDTH	HEIGHT	WEIGHT	MODEL	LIFT APPLICATION	TRACK	MOUNT